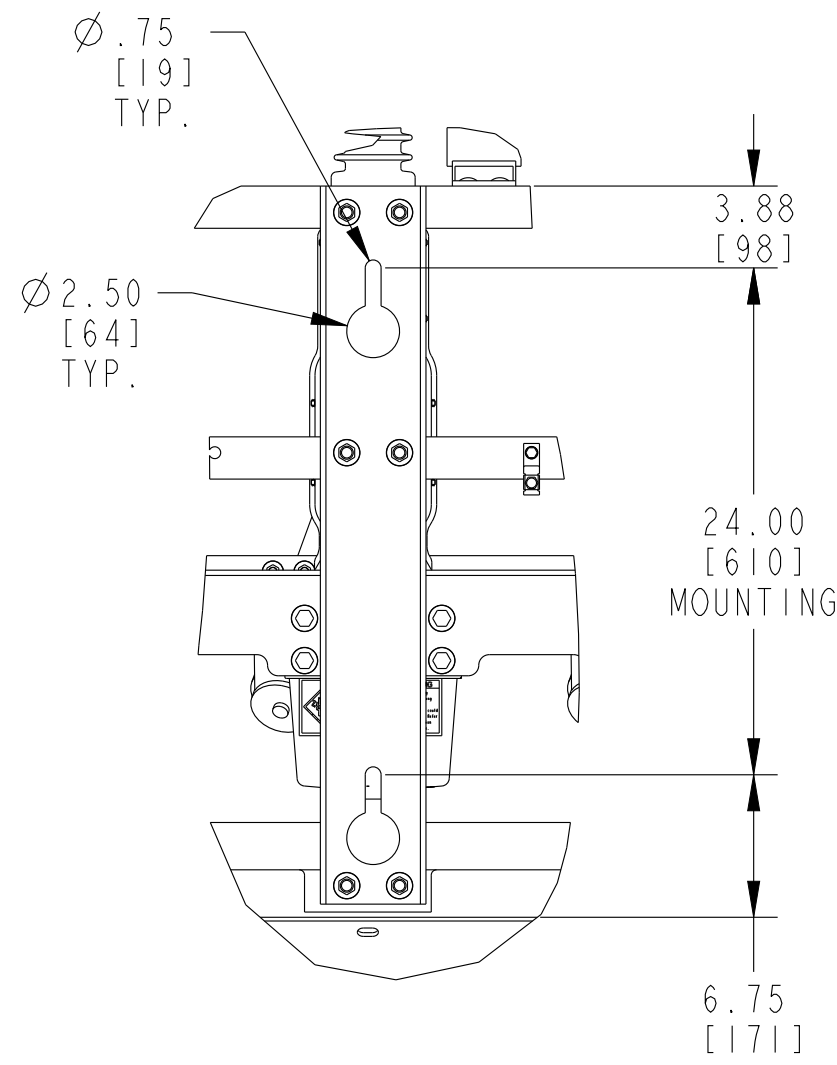


RECLOSER SPECIFICS:

- SCHWEITZER CONTROL PART NUMBER: SEL651R22CXBAXAE1112XXXX
- CONTROLLER WEIGHT: 150 LBS APPROXIMATE
- CONTROLLER SHIPPING WEIGHT: 250 LBS APPROXIMATE
- COTNROL CABLE IS HARDWIRED ON THE JUNCTION BOX AND CONNECTORIZED ON THE CONTROL SIDE. CABLE LENGTH 35 FT.
- CABLES FROM MODULES ARE HARDWIRED TO THE JUNCTION BOX.
- SIX (6) COPPER - 2 HOLE TINNED NEMA LUG FOR .995 ROD.
- CT RATIO FACTORY SET AT 1000:1 RATIO
- 27KV "Z" AND 27KV "Y" INSULATORS
- VIPER IS EQUIPPED WITH THREE VOLTAGE SENSORS. THREE INTERNAL LOW ENERGY ANALOG (LEA) VOLTAGE SENSORS ARE LOCATED ON THE Y SIDE.
- MAXIMUM OUTPUT OF INTERNAL LEA VOLTAGE SENSOR IS 5 VAC WITH A 10,000:1 RATIO.
- INTERNAL LEA VOLTAGE SENSING IS CALIBRATED AT THE FACTORY USING RATIO CORRECTION FACTORS (RCFS) PROVIDED WITH THE VIPER.
- RCFS ARE PROGRAMMED INTO THE CONTROL PAIRED WITH THE VIPER. RCFS MUST BE REPROGRAMMED IF A DIFFERENT CONTROL IS USED. SEE LABEL INCLUDED WITH CONTROL FOR RCF VALUES AND EQUIVALENT PT RATIO.

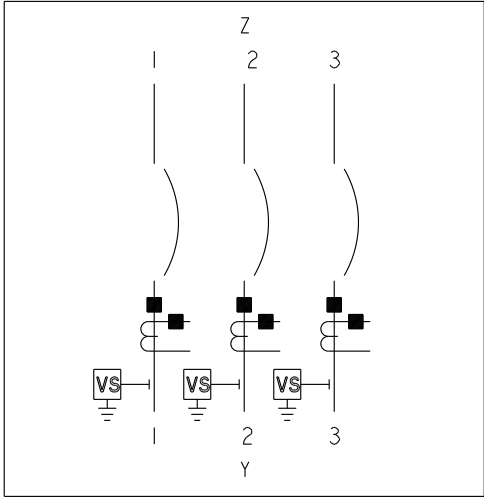


POLE MOUNTING
SADDLE

FINAL REVIEW		REVISIONS					
AC	SH	REV.	ECO	ENG	DES	DATE	
VX		A	453797	AC	AC	3-7-22	

RECLOSER ELECTRICAL INFORMATION

RATED VOLTAGE (MAXIMUM)	27	KV
IMPULSE LEVEL (BIL)	125	KV
CONTINUOUS CURRENT, RMS SYM	800	AMP
CURRENT INTERRUPTING, RMS SYM	12.5	KA
AC 1 MIN. WITHSTAND (DRY)	60	KV
10 SECOND AC WITHSTAND (WET)	50	KV
MOMENTARY CURRENT, RMS ASYM	20	KA
MAKING CURRENT, RMS ASYM	20	KA
SHORT-TIME WITHSTAND RATING (3 SECOND DURATION), RMS SYM	12.5	KA



THREE LINE DIAGRAM

IN SERVICE WEIGHT APPROX	635 LBS/	288 KG
SHIPPING WEIGHT APPROX	1000 LBS/	453 KG

NOTES:

1. POLYCARBONATE OPERATING MECHANISM COVER MOLDED LIGHT GRAY
2. INTERRUPTER MODULES ARE NOT INTENDED FOR DEAD ENDING. SEPARATE STRAIN RELIEF IS REQUIRED FOR CABLES.
3. MANUAL TRIP LEVER EQUIPPED WITH ELECTRICAL AND MECHANICAL LOCKOUT OF CLOSING CIRCUIT WHEN LEVER IS IN THE TRIPPED POSITION.
4. RECLOSER EQUIPPED FOR DEADLINE OPERATION USING POWER FROM THE BATTERY IN THE SEL651R (32 PIN DESIGN).
5. "Z" ENTRANCE, SILICONE SHED INSULATORS CREEPAGE DISTANCE IS APPROXIMATELY 28.50 INCHES [724 MM].
6. "Y" ENTRANCE, SILICONE SHED INSULATORS CREEPAGE DISTANCE IS APPROXIMATELY 28.50 INCHES [724 MM].
7. FOR MOUNTING USE 1/2" [13 MM] DIAMETER BOLTS AND WASHERS. MINIMUM AND 3/4" [19 MM] DIAMETER BOLTS AND WASHERS MAXIMUM.
8. MOUNTING BRACKETS WILL FIT 9" [229 MM] TO 14" [356 MM] DIAMETER POLE.
9. LIGHTNING ARRESTER MOUNTING PROVISIONS INCLUDED.
10. RECLOSER CAN BE MOUNTED TO THE FRAME IN THE 45° (AS SHOWN). ADJUST THE JUNCTION BOX TO MAINTAIN A HORIZONTAL ORIENTATION OF THE BOTTOM VENT AND CONTROL CABLE INTERFACE.
11. RECLOSER IS EQUIPPED WITH A 1000/500:1 CURRENT TRANSFORMER ON EACH PHASE. FACTORY SET AT 1000:1 RATIO. REFER TO INSTALLATION, OPERATION AND MAINTENANCE INSTRUCTIONS FOR CHANGING CURRENT TRANSFORMER RATIO IN THE FIELD.
12. RECLOSER EQUIPPED WITH FIELD REPLACEABLE SILICONE SHED INSULATORS. A 38KV 800A DEADBREAK APPARATUS BUSHING PER IEEE 386 INTERFACE 13 IS USED TO CONNECT THE SILICONE SHED INSULATOR TO THE RECLOSER. THIS 38KV APPARATUS BUSHING IS SUITABLE FOR USE WITH 600A OR 900A RATED ELBOWS.
13. SWITCH TO SHIP WITH FRAME EXTENSION AND SUPPORT UNASSEMBLED.

PRINT IDENTIFICATION

DATE _____ G&W NO. _____

CUSTOMER _____

ORDER NO. _____

☐ FOR RECORD _____ ITEM NO. _____

☐ FOR APPROVAL-NO MORE WORK TO BE DONE UNTIL APPROVAL IS RECEIVED _____ CT RATIO 1000:1

CONTROLLER NO. _SEL651R22CXBAXAE1112XXXX_

* ALL PRIMARY DIMENSIONS ARE IN INCHES.
ALL SECONDARY DIMENSIONS ARE IN MILLIMETERS.

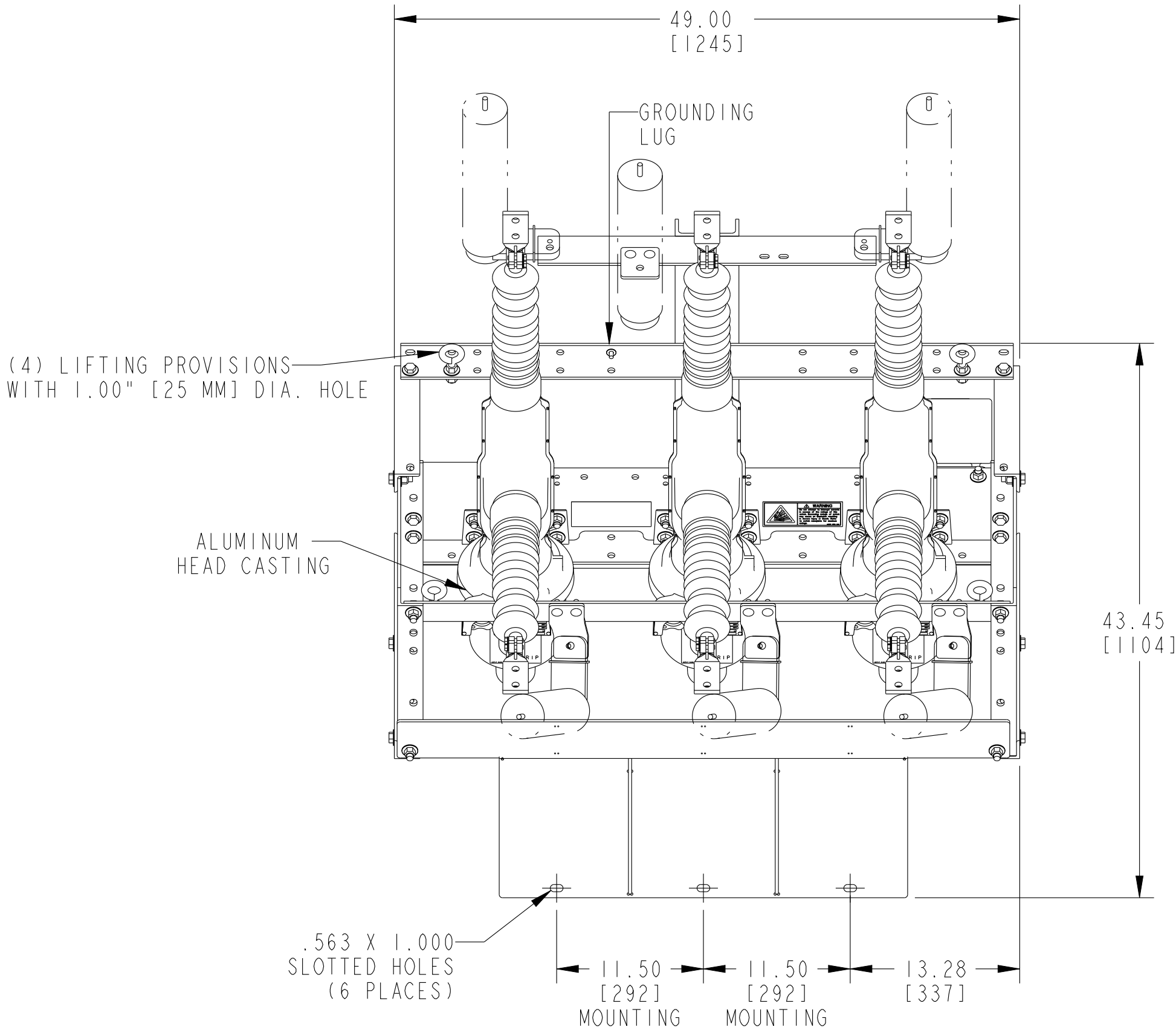
ALL DRAWING CHANGES MUST BE MADE ON CAD. ANY MANUAL CHANGES WILL VOID DRAWING.

VIP388ER-12-1-ST

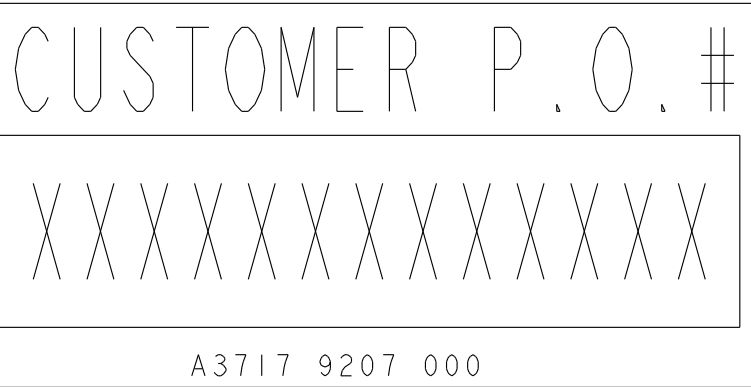
27KV SOLID DIELECTRIC RECLOSER



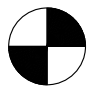
CAT. NO.: VIP388ER-12-1-ST				DRAWING NO.		REV A
ENG/DES: MZ		MZ	DATE: Apr-16-19		D8703 PT2L KGO	
APPR BY: RSP		DATE: Apr-16-19		SCALE:		
					SHEET: 1 of 1	



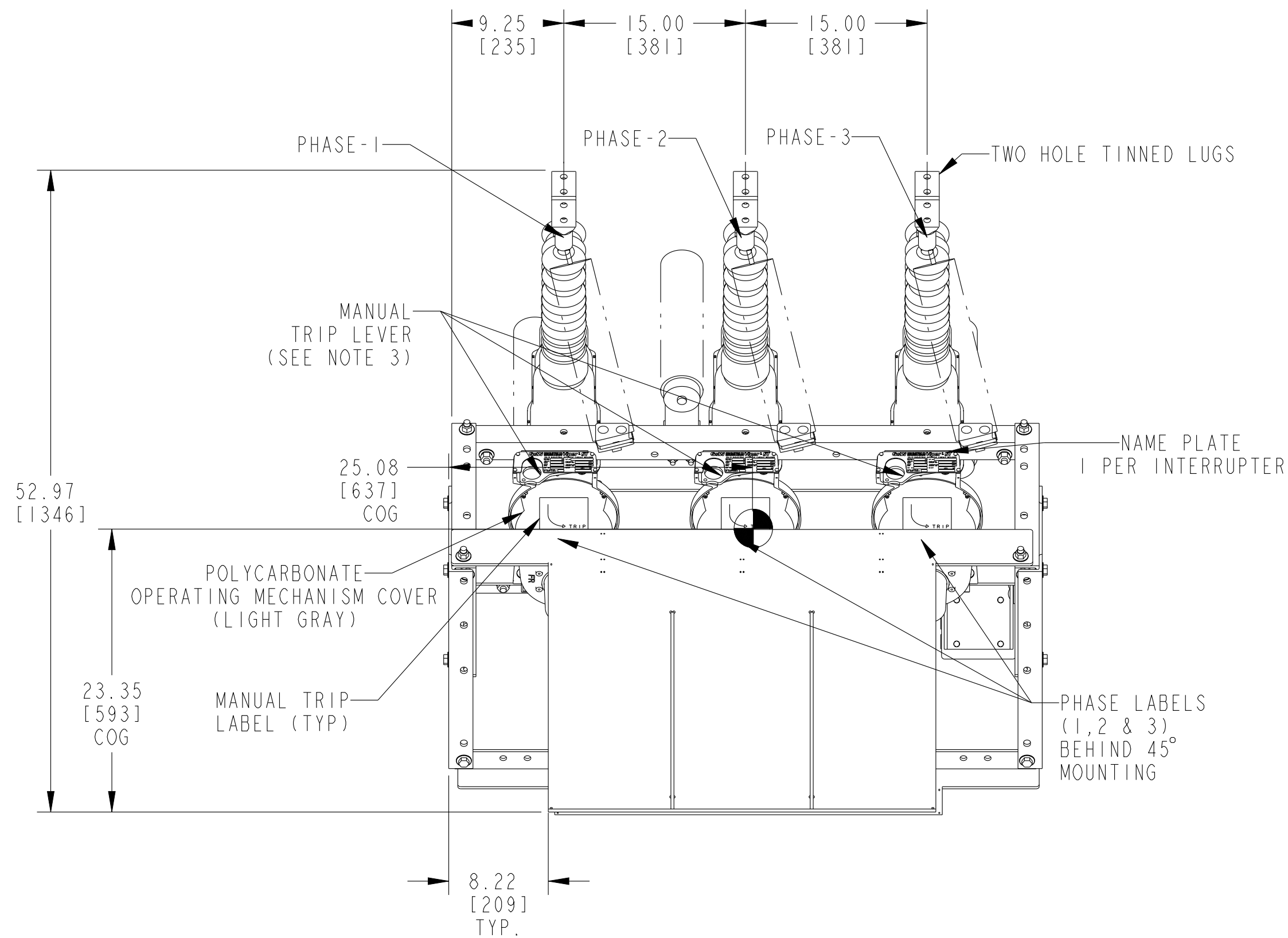
TOP VIEW



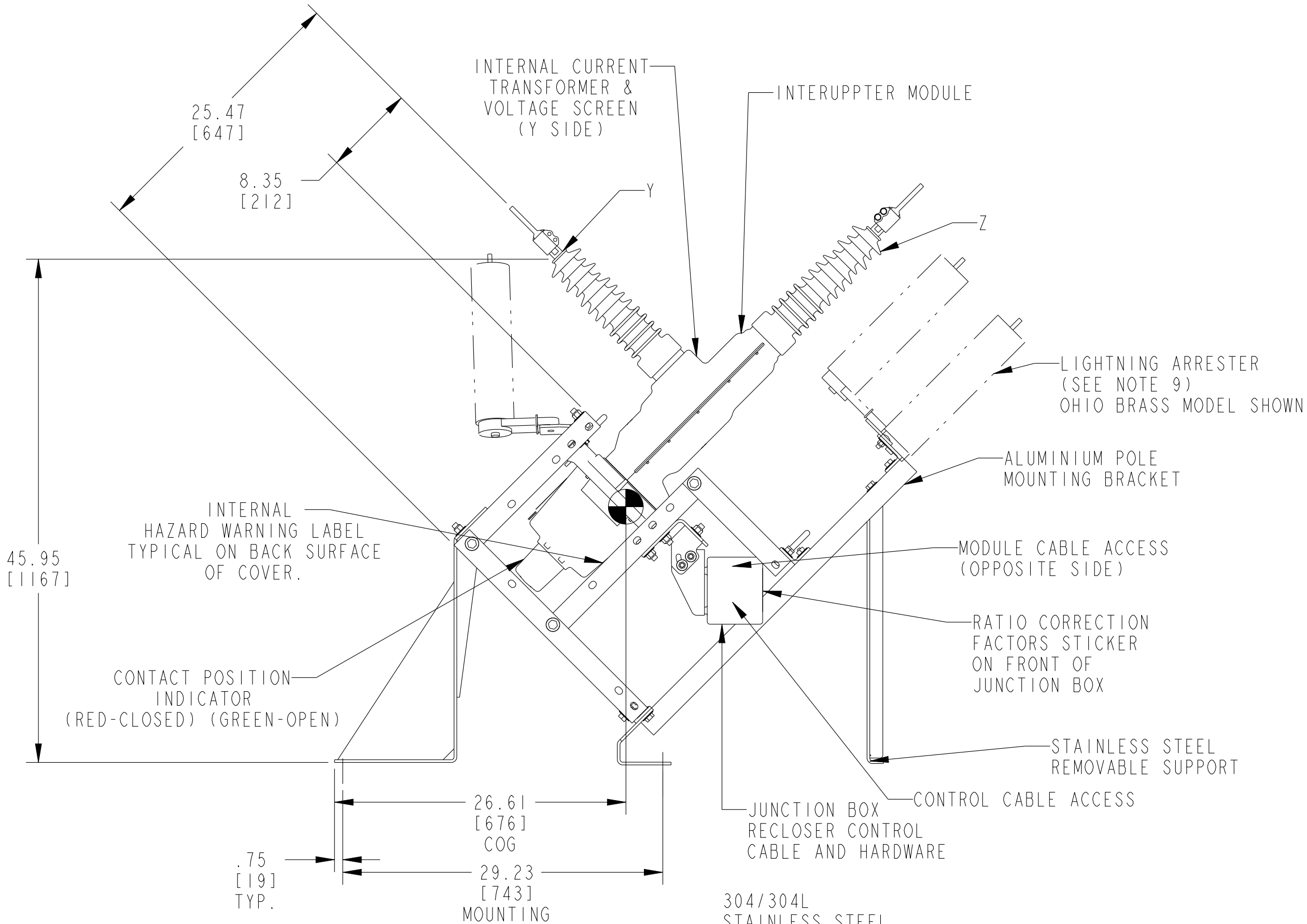
LABEL VIEW



= APPROXIMATE CENTER OF GRAVITY (COG)



FRONT VIEW



RIGHT VIEW